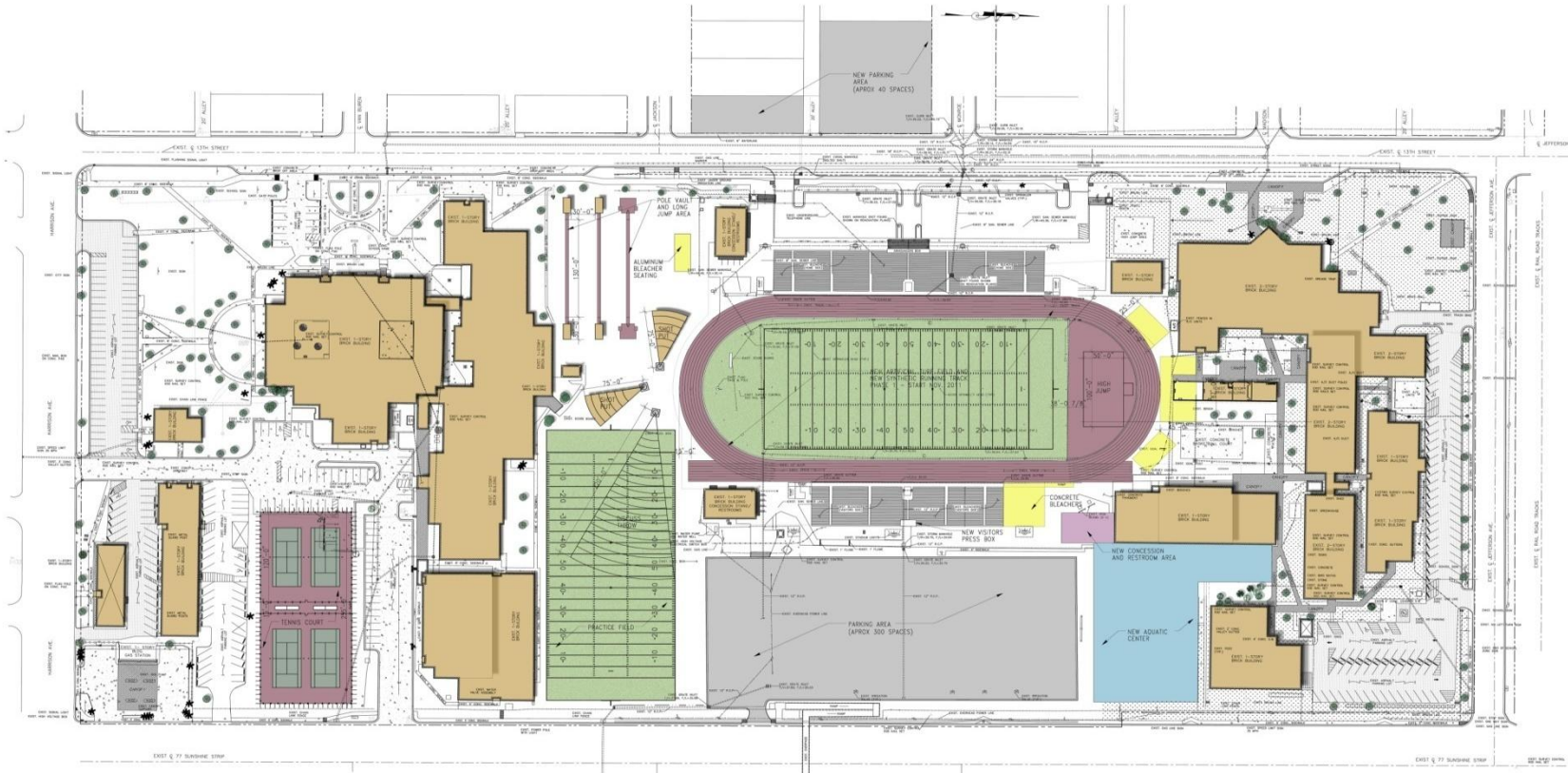


BOGGUS STADIUM
DESIGN COMMITTEE MEETING
AUGUST 30, 2011

FINAL MASTER PLAN



- MOVE TRACK 15'-0" SOUTH
- CONCRETE BLEACHERS NE VISITOR'S SIDE (700 - 750)
- RE-LOCATE ALUMINUM BLEACHERS
- CENTER SECTION - (760)
- CURVES (290 EACH)
- 1340 SEATS
- RE-LOCATE TENNIS COURTS - DEMO BLDGS @ VERNON
- VERNON PRACTICE FIELDS REMAIN
- GROUP ALL FIELD EVENTS SW HOME SIDE
- HIGH JUMP @ NORTH "D" AREA

- LARGE FUTURE PARKING AREA (300 SPACES APPROX.)
- NEW VISITOR'S PRESS BOX
- NEW CONCESSION & RESTROOM AREA

BOGGUS MASTER PLAN
Harlingen C.I.S.D.
Harlingen, Texas

MEMORIAL M.S. RE-PURPOSE PROJECT

HCISD 2010 BOND

Preliminary Building Program

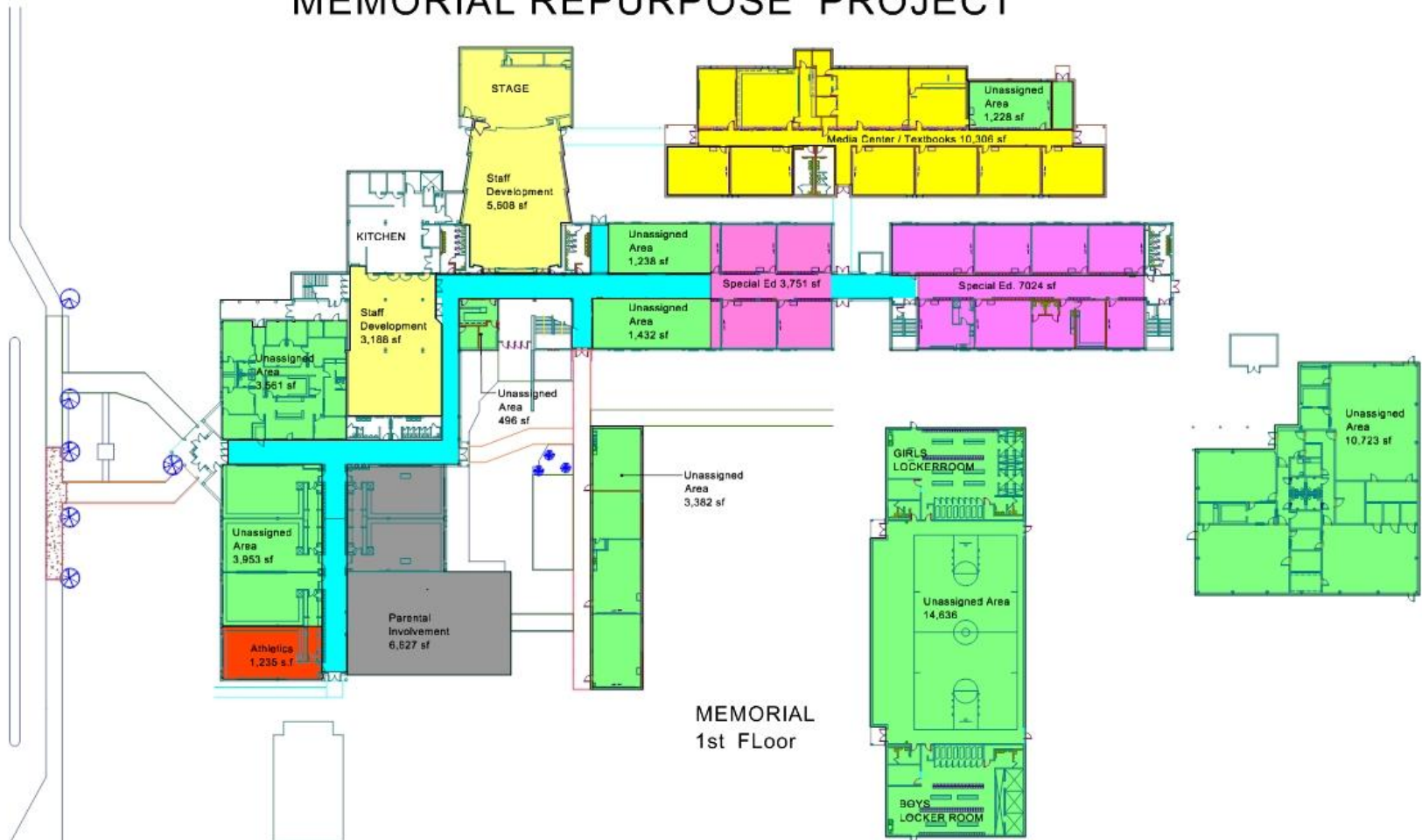
- Scope of Work

Repurpose the existing Memorial middle school to serve as an administrative annex.

□ Space Allotments	Current	x 25+%	New space
□ Migrant Programs		6,420 sf	9,353 sf
□ Parental involvement		5,380 sf	6,627 sf
□ Athletics		512 sf	1,235 sf
□ Special Education		8,604 sf	10,775 sf
□ Media Center/Textbooks		8,197 sf	10,306 sf
□ Staff Development			8,796 sf
□ Research and Dev.		2,422 sf	
□ Network Operations Ctr.		1,560 sf	5,038 sf
□ Ace Program		800 sf	
□ Cate		1,152 sf	
□ Special Programs		528 sf	
□ Advanced Academic Svc.		640 sf	
□ <u>Music Education</u>		640 sf	5,051 sf
□ Assigned Net Areas			57,181 sf
□ <u>Unassigned Net Areas</u>			42,765 sf
□ Net Square footage			99,946 sf

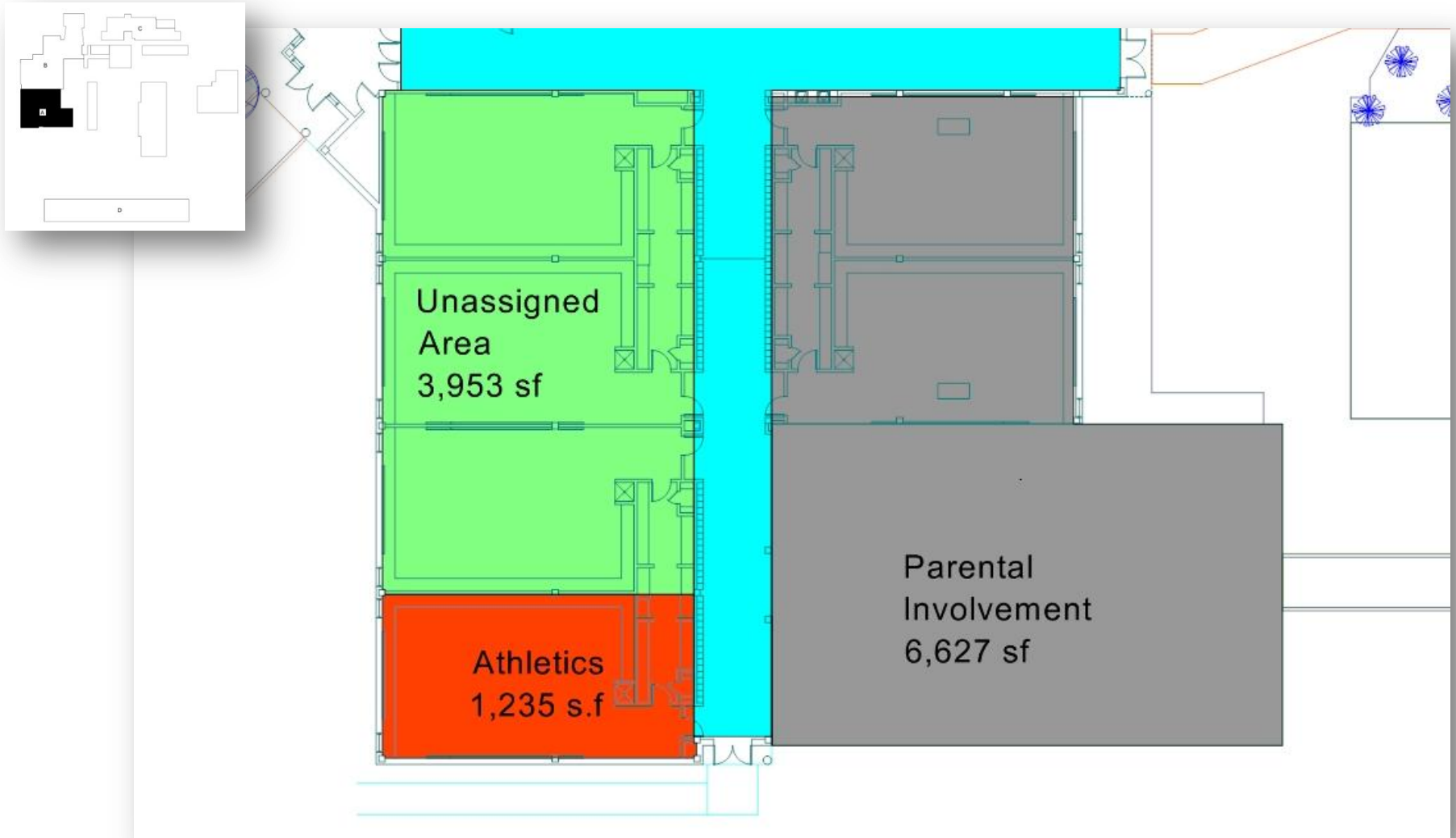
Overall 1st floor plan

MEMORIAL REPURPOSE PROJECT

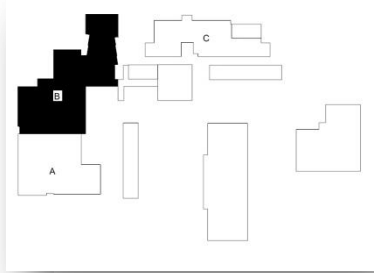


MEMORIAL
1st Floor

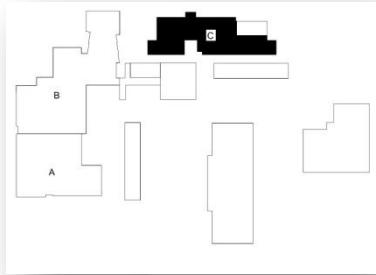
Section "A" 1st floor



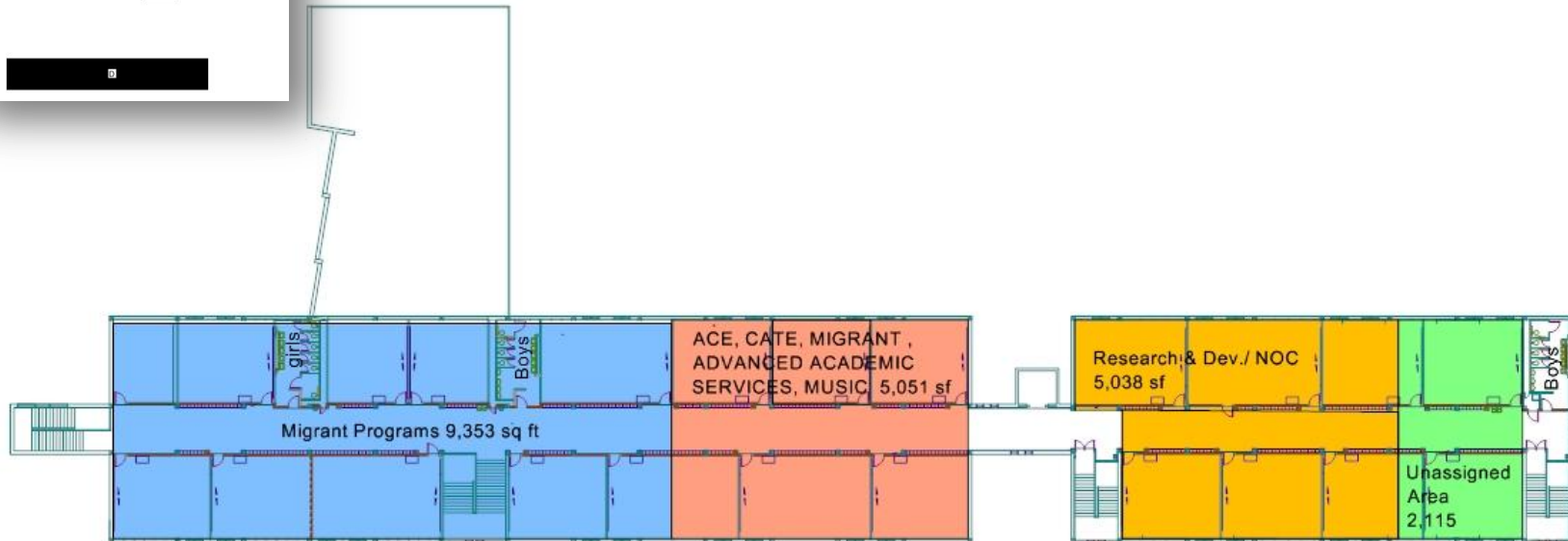
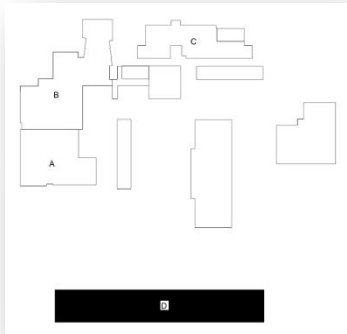
Section "B" 1st floor



Section "C" 1st floor



Section "D" 2nd floor



14,404 sf total area

MEMORIAL
2nd FL

Total Building Gross Sq. Ft. 106,488

