

# **HCISD Agricultural Farm Design**

## **Committee Meeting**

Date and Time: July 6, 2011, 3:30pm

Location: District Operations Conference Room

### **Agenda**

1. Administrative Introductory Remarks.
2. Review of updated meeting minutes.
3. Review of updated floor plan.
4. Adjournment

---

**MEETING MINUTES**

---

**PARTICIPANTS:** See sign in sheet

**COPIES TO:** All parties, File

**PLACE/DATE OF MEETING:** District Ops. Bldg.  
Apr. 19, 2011

**MINUTES BY:** Benito Lozano III

**PROJECT:** HCISD Ag Farm

**PROJECT #:**1028

---

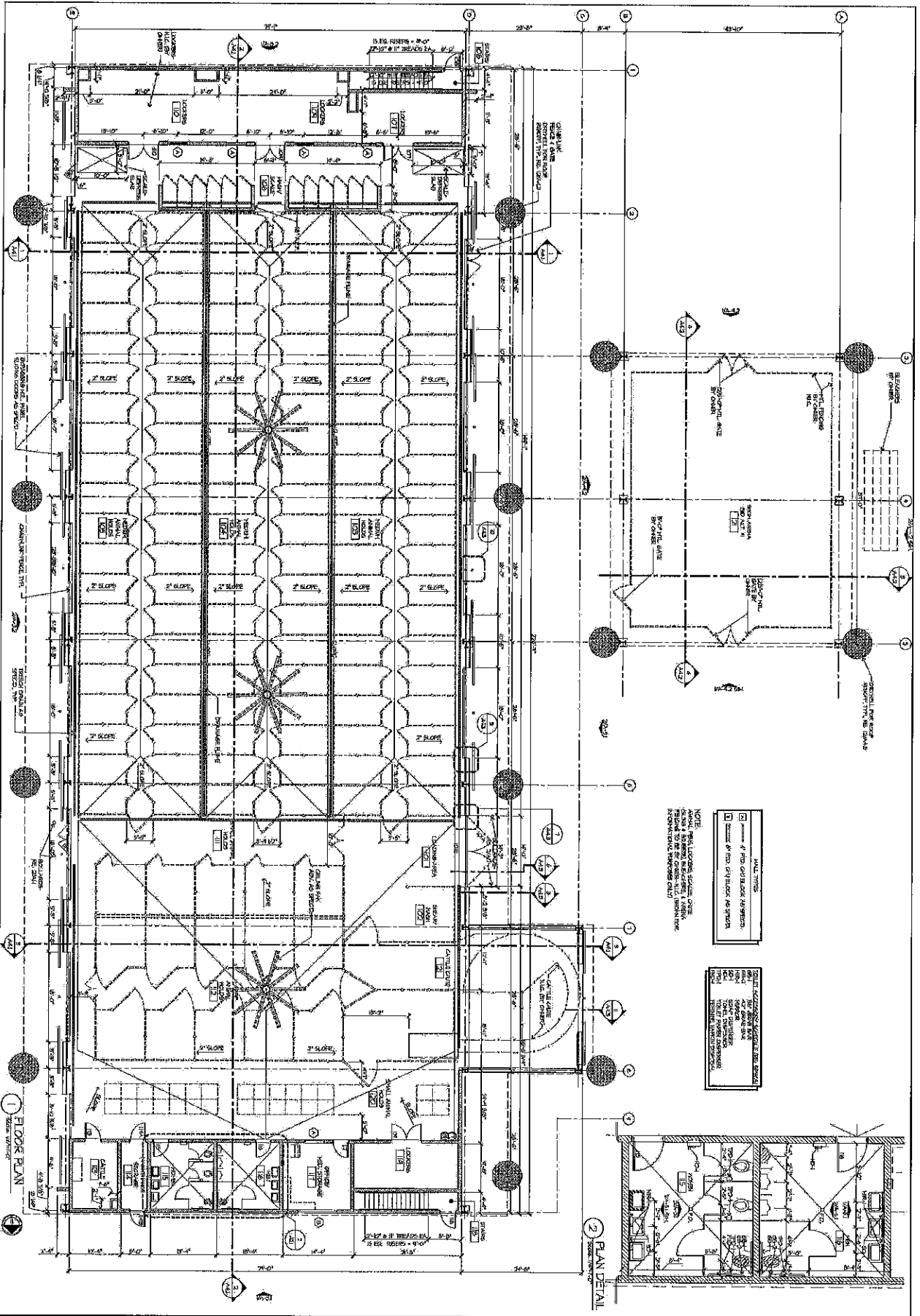
**Discussion Items:**

1. Meeting commences with review of updated floor plan. Following are highlights of key changes from previous meeting, with associated committee comments.
  - a. Committee accepts latest floor plan and sees only concern making sure all parts come as specified, particularly animal pens. Suggestion is made of district purchasing pens on a separate contract from that for the construction of the facility to get a more favorable price. Would be great so long as product meets specifications and not a lesser equal.
  - b. Comment made of possibly utilizing space beneath stairs for additional storage.
  - c. Hog was pens to have gates at ends. Favorable size of wash pens to be 4'x5'. Current number of pens is more than adequate.
  - d. Tractor access gates at chain-linked fence behind sliding doors to be 12' wide to assure large vehicle clearance.
  - e. Latest information on trench drains presented, particularly that grates at locations open to machine traffic are to be composed of either ductile iron or cast iron, with all other locations sufficing with fiberglass grates.
  - f. Show arena to be located at non-public access side of facility.
  - g. Contingent upon site selection, question is posed with regards to sewage management. Committee comments that septic tanks are ok if need be. It is commented that sites being researched would make use of a septic system, with the possibility of tying into the city sewer system in the not too distance future.

---

Additions and/or corrections to these minutes should be sent to [mega@megamorphosisdesign.net](mailto:mega@megamorphosisdesign.net) within seven (7) days of receipt.

---



A-2.1

1022  
MAY 21, 2011

PROJECT #  
1022  
MAY 21, 2011

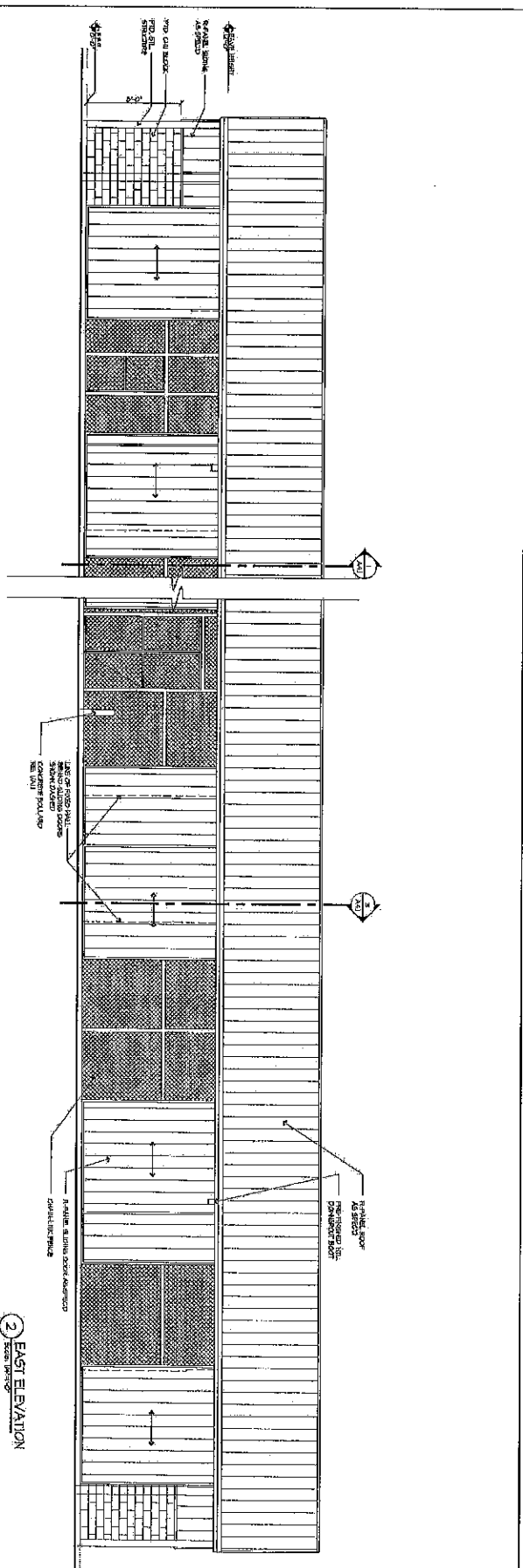
**MEGAMORPHOSIS**  
ARCHITECTURE & INTERIOR DESIGN  
1400 N. STUART PLACE RD., SUITE D  
HARLINGEN, TX 77550  
PHONE: 409.426.1779 FAX: 409.426.5006

FLOOR PLAN

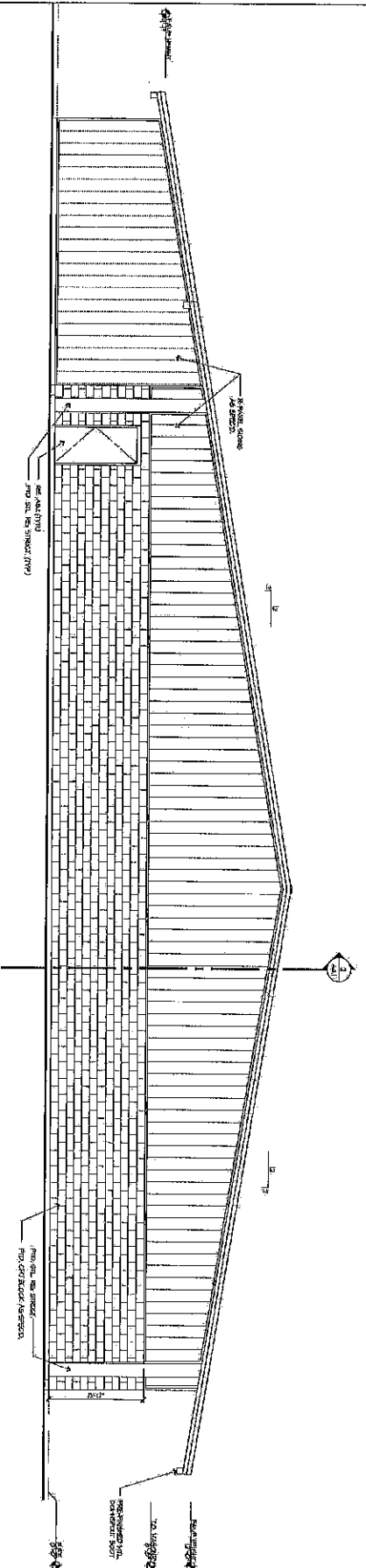
AG FARM  
HARLINGEN C.I.S.D.  
Harlingen, TX 78550

REVISIONS





2 EAST ELEVATION



1 SOUTH ELEVATION

REVISIONS

AG FARM  
HARLINGEN C.I.S.D.  
Harlingen, TX 78550

EXTERIOR  
ELEVATIONS

**MEGAMORPHOSIS**  
ARCHITECTURE & INTERIOR DESIGN  
1400 N. STUART PLACE RD., SUITE B  
PHOENIX, AZ 85018  
TEL: 602.998.1234

PRELIMINARY  
NOT FOR  
REGULATORY  
APPROVAL,  
REVISIONS OR  
CONSTRUCTION  
PROJECT #  
1028  
MAY 31, 2011  
A-32

REVISIONS

NO.

DATE

DESCRIPTION

BY

CHKD

APP'D

REVISED

SCALE

PROJECT #

DATE

BY

CHKD

APP'D

REVISED

SCALE

PROJECT #

DATE

BY

CHKD

APP'D

REVISED

SCALE

PROJECT #

DATE

BY

CHKD

APP'D

REVISED

SCALE

PROJECT #

DATE

BY

CHKD

APP'D

REVISED

SCALE

PROJECT #

DATE

BY

CHKD

APP'D

REVISED

SCALE

PROJECT #

DATE

BY

CHKD

APP'D

REVISED

SCALE

PROJECT #

DATE

BY

CHKD

APP'D

REVISED

SCALE

PROJECT #

DATE

BY

CHKD

APP'D

REVISED

SCALE

PROJECT #

DATE

BY

CHKD

APP'D

REVISED

SCALE

PROJECT #

DATE

BY

CHKD

APP'D

REVISED

SCALE

PROJECT #

DATE

BY

CHKD

APP'D

REVISED

SCALE

PROJECT #

DATE

BY

CHKD

APP'D

REVISED

SCALE

PROJECT #

DATE

BY

CHKD

APP'D

REVISED

SCALE

PROJECT #

DATE

BY

CHKD

APP'D

REVISED

SCALE

PROJECT #

DATE

BY

CHKD

APP'D

REVISED

SCALE

PROJECT #

DATE

BY

CHKD

APP'D

REVISED

SCALE

PROJECT #

DATE

BY

CHKD

APP'D

REVISED

SCALE

PROJECT #

DATE

BY

CHKD

APP'D

REVISED

SCALE

PROJECT #

DATE

BY

CHKD

APP'D

REVISED

SCALE

PROJECT #

DATE

BY

CHKD

APP'D

REVISED

SCALE

PROJECT #

DATE

BY

CHKD

APP'D

REVISED

SCALE

PROJECT #

DATE

BY

CHKD

APP'D

REVISED

SCALE

PROJECT #

DATE

BY

CHKD

APP'D

REVISED

SCALE

PROJECT #

DATE

BY

CHKD

APP'D

REVISED

SCALE

PROJECT #

DATE

BY

CHKD

APP'D

REVISED

SCALE

PROJECT #

DATE

BY

CHKD

APP'D

REVISED

SCALE

PROJECT #

DATE

BY

CHKD

APP'D

REVISED

SCALE

PROJECT #

DATE

BY

CHKD

APP'D

REVISED

SCALE

PROJECT #

DATE

BY

CHKD

APP'D

REVISED

SCALE

PROJECT #

DATE

BY

CHKD

APP'D

REVISED

SCALE

PROJECT #

DATE

BY

CHKD

APP'D

REVISED

SCALE

PROJECT #

DATE

BY

CHKD

APP'D

REVISED

SCALE

PROJECT #

DATE

BY

CHKD

APP'D

REVISED

SCALE

PROJECT #

DATE

BY

CHKD

APP'D

REVISED

SCALE

PROJECT #

DATE

BY

CHKD

APP'D

REVISED

SCALE

PROJECT #

DATE

BY

CHKD

APP'D

REVISED

SCALE

PROJECT #

DATE

BY

CHKD

APP'D

REVISED

SCALE

PROJECT #

DATE

BY

CHKD

APP'D

REVISED

SCALE

PROJECT #

DATE

BY

CHKD

APP'D

REVISED

SCALE

PROJECT #

DATE

BY

CHKD

APP'D

REVISED

SCALE

PROJECT #

DATE

BY

CHKD

APP'D

REVISED

SCALE

PROJECT #

DATE

BY

CHKD

APP'D

REVISED

SCALE

PROJECT #

DATE

BY

CHKD

APP'D

REVISED

SCALE

PROJECT #

DATE

BY

CHKD

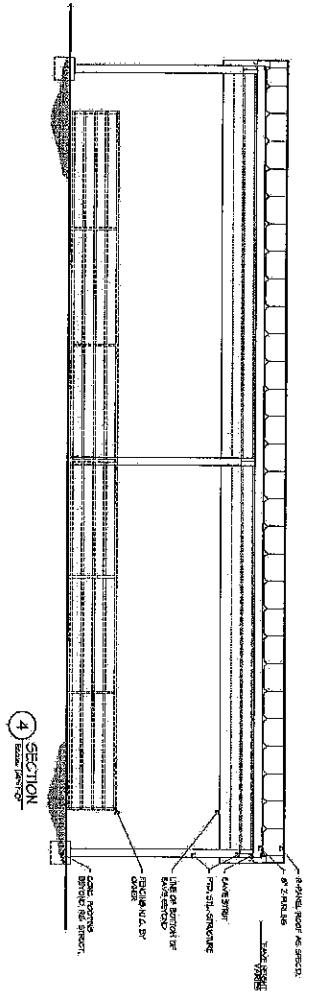
APP'D

REVISED

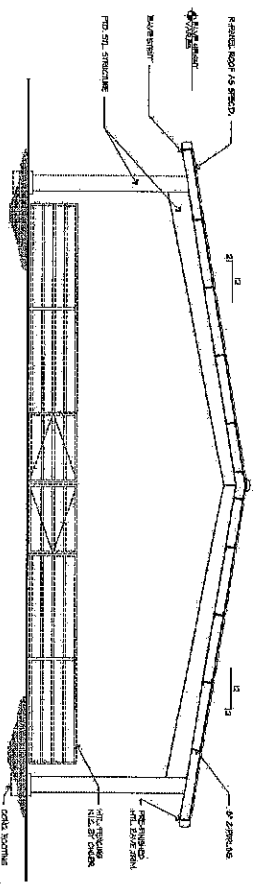
SCALE

PROJECT #

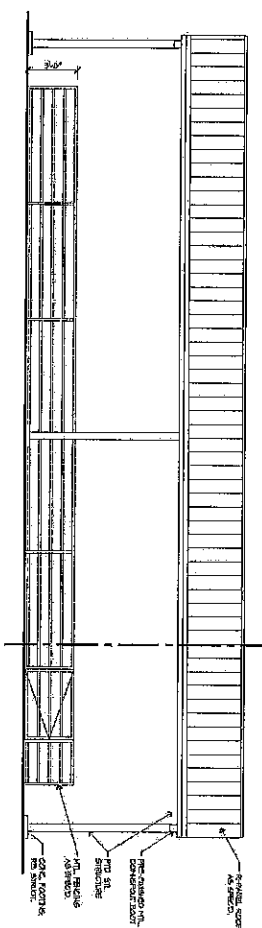
DATE



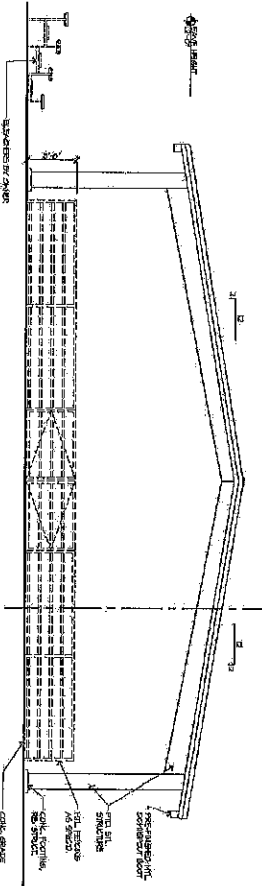
4 SECTION  
SECTION THROUGH



3 SECTION  
SECTION THROUGH



2 ELEVATION  
SECTION THROUGH



1 ELEVATION  
SECTION THROUGH

REVISIONS

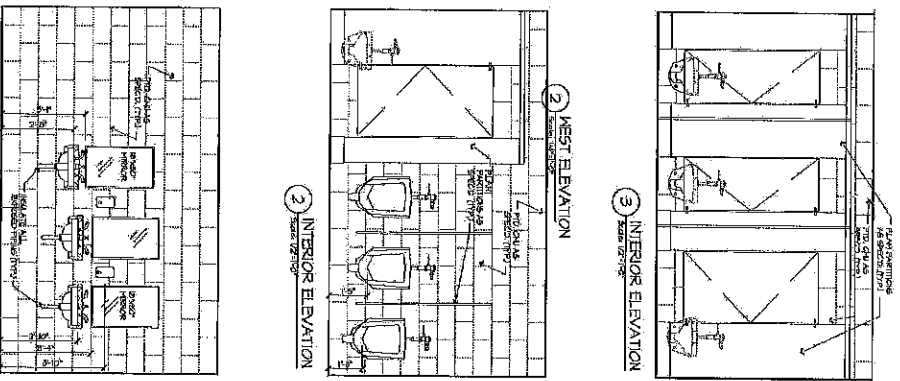
AG FARM  
HARLINGEN C.I.S.D.  
Harlingen, TX 78550

SHOW ARENA  
SECTIONS

**MEGAMORPHOSIS**  
- ARCHITECTURE & INTERIOR DESIGN  
5408 W. STUART PLACE RD., SUITE B  
PH: 361.488.0800 FAX: 361.488.0802

PRELIMINARY  
NOT FOR  
REGULATORY  
APPROVAL  
PERMITTING OR  
CONSTRUCTION  
PROJECT #  
1028  
MAY 31, 2011  
A-4.2





REVISIONS

AG FARM  
HARLINGEN C.I.S.D.  
Harlingen, TX 78550

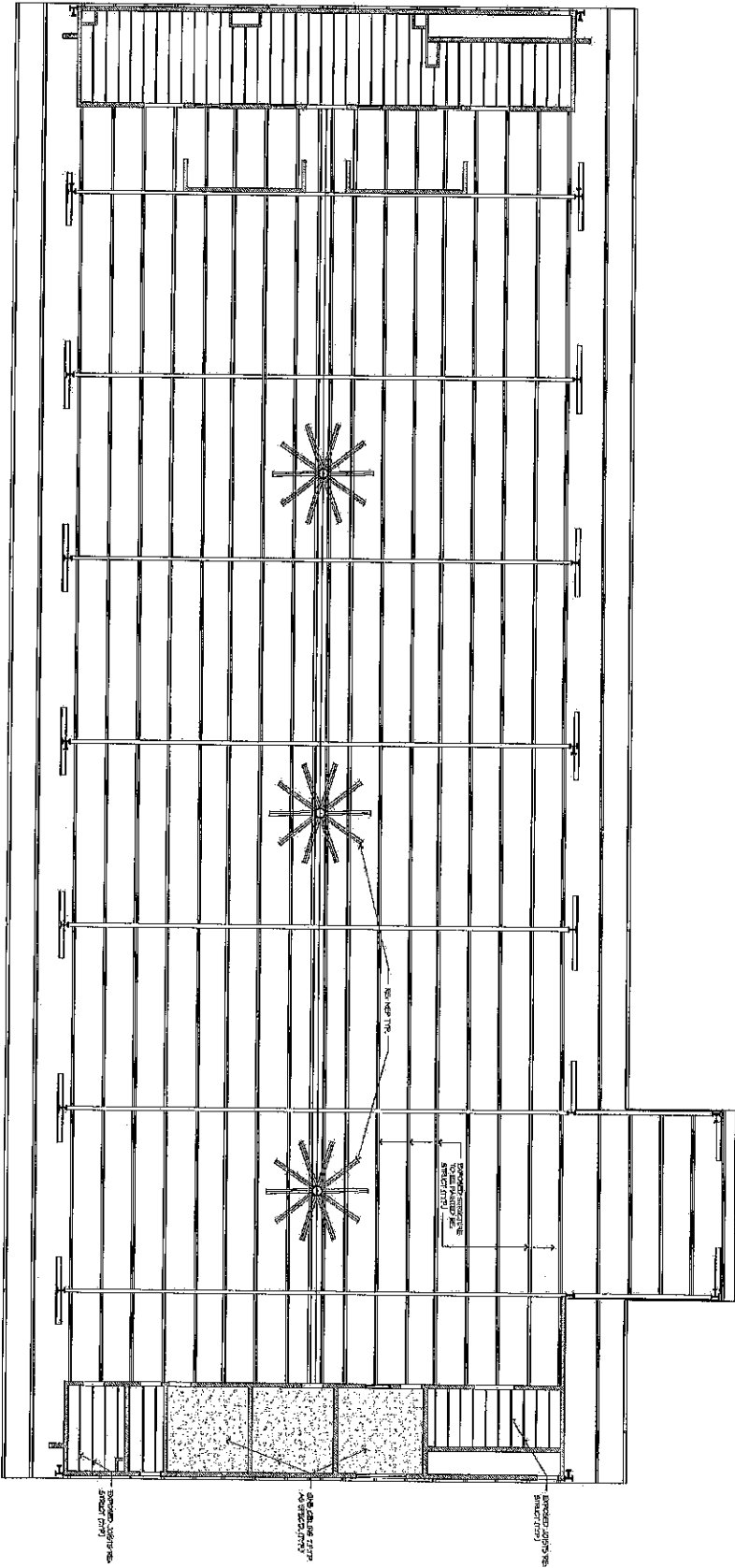
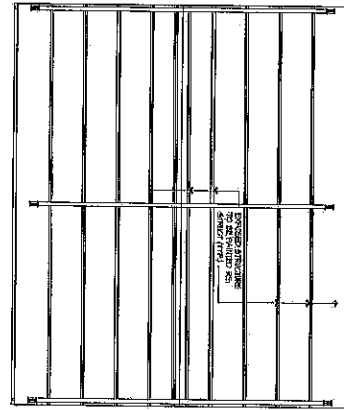
INTERIOR  
ELEVATIONS

**MEGAMORPHOSIS**  
ARCHITECTURE & INTERIOR DESIGN  
1409 K. STUART PLACE 60., SUITE D  
PHONO: 610.924.0047 FAX: 610.924.0048

PRELIMINARY  
NOT FOR  
REGULATORY  
APPROVAL,  
PERMITTING OR  
CONSTRUCTION  
PROJECT #  
1082  
MAY 31, 2011

A-5.1





1 RCP  
Scale: 1/8\"/>

REVISIONS

AG FARM  
HARLINGEN C.I.S.D.  
Harlingen, TX 78550

REFLECTED  
CEILING PLAN

**MEGAMORPHOSIS**  
ARCHITECTURE & INTERIOR DESIGN  
1409 N. STUART PLACE RD., SUITE D  
PH: (361) 596-1229 FAX: (361) 421-5800

PRELIMINARY  
NOT FOR  
RELIANCE  
APPROVAL  
PERMITTING OR  
CONSTRUCTION  
PROJECT #  
1082  
MAY 31, 2011

A-7.1

